

AquaGo1011 A172-UG-VR-BF

BARRIER FREE, VANDAL RESISTANT BUTTON, UNIVERSAL BI-LEVEL, WALL MOUNTED DRINKING FOUNTAIN WITH PUSHBUTTON OR SENSOR OPERATED BOTTLE FILLER

STANDARD FEATURES

Drinking Fountain

- Child or Adult Ada Compliant (When Properly Installed)
- Apron and One-Piece Bottom Wrapper is Satin SS Finish
- Low Flow, I, Anti-Rotation, Non-Squirt Bubbler
- Auto-Stop Allows Cartridge And Strainer Service Without Removing Cooler Deck To Access Water Supply Stop
- Universal Bi-Level Can Be Installed Left High or Right High With No Additional Parts.
- Lead-Free
- Rough-Ins Match Other Manufacturer's for Easy Replacement

Bottle Filler

- Hands-Free Sensor Operation or Pushbutton Operated
- ADA Compliant
- 100-Mesh Inlet Strainer
- 220-240.50Hz 20amp 9VDC Plug-In Transformer, With -BF12 Only
- Laminar Flow Water Supply
- 1 GPM Fill Rate
- -BF12 Sensor Has a 20 Seconds Maximum Run Time

SUGGESTED SPECIFICATIONS

Drinking Fountain

Model A172108F-UG-VR-BF is a self-contained, Bi-Level Drinking Fountain. Units shall be activated by Vandal Resistant Chrome Plated Brass Front Pushbuttons by using less than 5 pounds of force. Bubbler shall deliver a 0.3 GPM flow, have an Antimicrobial Flexible Guard with an integrally designed Non-Squirt feature and operate on a water pressure range of 20-105 PSIG. Basin shall be constructed from 304 Stainless Steel and have an Integral Drain. Cabinet shall be Stainless Steel with Satin Finish or Galvanized/Galvannealed Steel with Gray Powder Coat Finish. Fountain Unit is certified to ANSI A117.1, Public Law 111-380 (NO-LEAD), CHSC 116875 and NSF/ANSI 61, Section 9. Fixture meets ADA, ADA Standing Person, and ADA Child requirements when mounted appropriately.

Bottle Filler -BF12

Bottle Filling unit shall include Sensor Operated activation with a 20 second maximum run time. LED Lights illuminate the Bottle Fill area and brighten when a bottle is detected. Optional -BCD (Bottle Counter Display) indicates the quantity of 16 oz disposable Plastic Bottles saved from a land fill and also displays the Water Filter status.

Bottle Filler housing construction will be 20 gauge Stainless Steel with a satin finish and will also include components manufactured from Antimicrobial, impact resistant ABS. Bottle Filler shall provide approximately 1 GPM flow rate with a Laminar Flow Spout to minimize splashing.

Complies

with the following standards:



NSF/ANSI 61



Federal Public Law 111-380 (No Lead) CHSC 116875



"RATED FOR INDOOR USE ONLY"

MODEL:
(Must Specify)

STAINLESS STEEL BUBBLER

- A172400S-UG-VR Satin Stainless Finish

MUST SPECIFY BOTTLE FILLER:

- BF12-BCD Bottle Filler with Sensor Operation with Bottle Counter Display

WATER COOLER OPTIONS

(additional costs may apply)

- LK51300C 3000-Gallon Capacity, NSF 42+53, 1-Micron Lead Reduction Filter Included



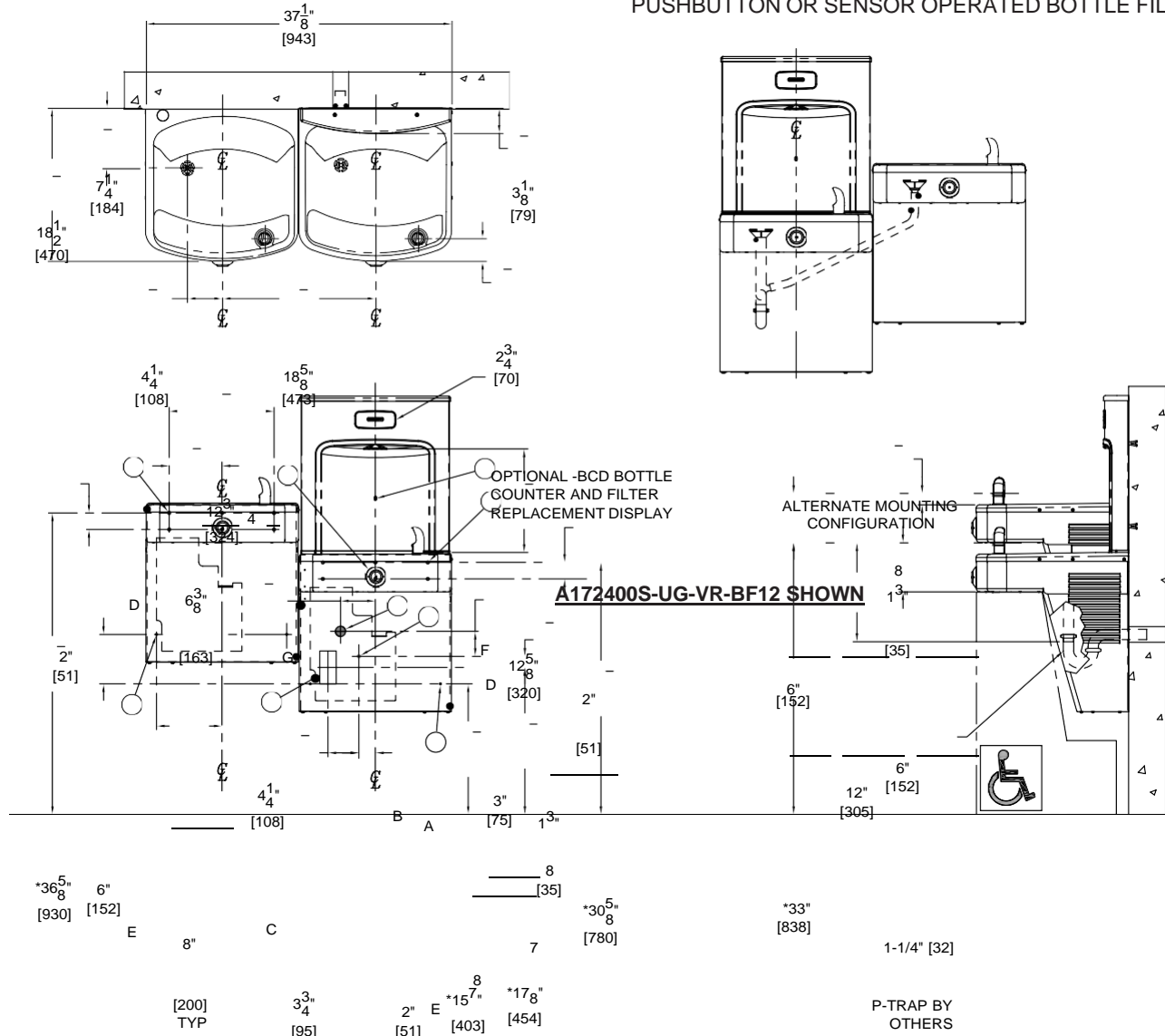
Member of U.S. Green Building Council

Recyclable Product Water Conserving Product

Accessibility Compliance is subject to local Code Enforcement Authority.

⚠ WARNING: Cancer and Reproductive Harm - www.P65Warnings.ca.gov

AquaGo 1011 **A172-UG-VR-BF**
BARRIER FREE, VANDAL RESISTANT BUTTON, UNIVERSAL
BI-LEVEL, WALL MOUNTED DRINKING FOUNTAIN WITH
PUSHBUTTON OR SENSOR OPERATED BOTTLE FILLER



GENERAL NOTES:

1. ALL DIMENSIONS ARE IN INCHES [MM]
2. ALLOW 4 INCHES [102MM] MINIMUM CLEARANCE PER SIDE FOR VENTILATION
- *3. DIMENSIONS SHOWN ARE FOR ADA ADULT HEIGHT. ADJUST VERTICAL DIMENSIONS AS NECESSARY TO COMPLY WITH FEDERAL, STATE & LOCAL CODES
4. STOP VALVE, P-TRAP & ELECTRICAL OUTLET NOT SUPPLIED
5. IMPORTANT: COOLERS MUST BE ATTACHED TO WALL WITH APPROPRIATE ANCHOR SCREWS

- A. 15mm Female Male BSP . SUPPLY INLET PLV Must Be Fitted
- B. WASTE OUTLET FOR P-TRAP BY OTHERS FOR PROVIDED 40mm Waste Trap Connection by Other
- C. ELECTRICAL SERVICE ROUGH-IN FOR OPTIONAL -BF12 SENSOR OPERATED BOTTLE FILLER, SHOWN
- D. Ø3/8" HANGER BRACKET PUNCHING, 6 PLACES FOR ANCHORING HARDWARE BY OTHERS
- E. Ø1/4" PUNCHING, 2 PLACES FOR ANCHORING HARDWARE, BY OTHERS
- F. BOTTLE FILLER SENSOR
- G. VANDAL RESISTANT PUSHBUTTON CARTRIDGE

Murdock Mfg.™ warrants that its products are free from defects in material or workmanship under normal use and service for a period of one year from date of shipment. Murdock's liability under this warranty shall be discharged solely by replacement or repair of defective material, provided Murdock™ is notified in writing within one year from date of shipment, F.O.B. Industry, California.



DRINKING FOUNTAIN/BOTTLE FILLER

SELECTION SUMMARY

MANUFACTURING

Model Number & Options _____	Quantity _____
Company _____	
Contact _____	Title _____
Signature (Approval for Manufacturing) _____	Date _____

All dimensions are subject to manufactures tolerance of plus or minus 1/2" nominal and subject to change without notice. Murdock assumes no responsibility for use of void or superseded data. Dimensions may change with the addition of optional accessories. Murdock Mfg.™, Member of Morris Group International™. Please visit www.murdockmfg.com for most current specifications.

MURDOCK MFG/ AquaGo ChemChek Group NZ Ltd Phone (09) 275-5019 •
www.aquagowater.co.nz

